

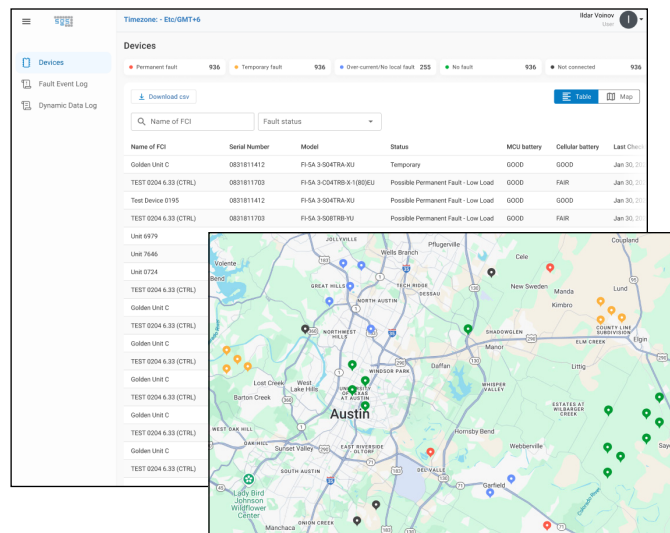
SGS WEB PORTAL - QUICK START GUIDE

1 Login

- Visit www.portal-sgs.com and log in using your credentials.
- For first-time users, click “Forgot Password” and follow the prompts to set your password.

2 Devices

The Devices screen displays all devices associated with the user’s account, along with key details such as battery status, check-in time, and location. Users can search, filter, and click on individual devices to view daily logs, events, and average load data. Admins can edit individual devices to update the name, location, and device group association. To switch to a geographic view, use the map icon in the top right corner.



3 Fault Event Log

Fault Event Log displays a log of the critical events, e.g. fault events.

4 Dynamic Data Log

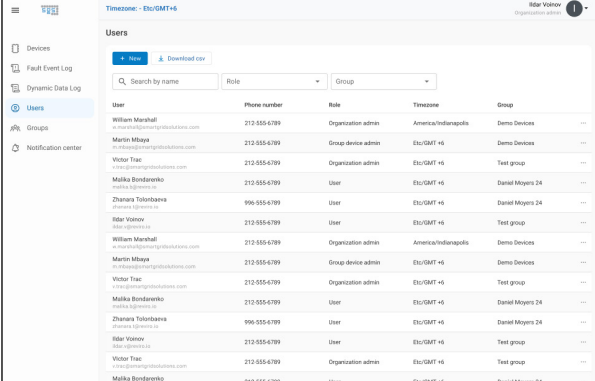
Dynamic Data Log displays all data registered on the portal; data may be limited to 30 days based on your user settings. These sets of data include regular check-ins, permanent faults, and temporary faults.

Name of FCI	Serial Number	Timestamp	Fault Status
Johnson Creek Pole - A	FCSN0027	Jun 08, 2025, 08:18:39 PM	Permanent
Pine Ridge Pole - A	FCSN0026	Jun 08, 2025, 08:18:39 PM	Permanent
Sycamore Pole - A	FCSN0025	Jun 08, 2025, 08:18:39 PM	Permanent
Johnson Creek Pole - A	FCSN0027	Jun 08, 2025, 08:00:47 AM	None
Alabama Street Pole - A	FCSN0023	Jun 08, 2025, 08:00:47 AM	None
Willow Bend Pole - A	FCSN0028	Jun 08, 2025, 08:00:47 AM	None

SGS WEB PORTAL - ADDITIONAL INFO

5 Users

The Users screen displays a list of all users within the organization, along with their contact details and access levels. Admins can add, edit, or remove users as needed.



User	Phone number	Role	Timezone	Group
William Marshall wmarshall@smartgridsolutions.com	212-555-6789	Organization admin	America/Indianapolis	Demo Devices
Martin Miaya mmiya@smartgridsolutions.com	212-555-6789	Group device admin	Etc/GMT +6	Demo Devices
Victor Trac vtrac@smartgridsolutions.com	212-555-6789	Organization admin	Etc/GMT +6	Test group
Malika Bondarenko mbondarenko@smartgridsolutions.com	212-555-6789	User	Etc/GMT +6	Daniel Moyers 24
Zhanara Tolobayeva ztolobayeva@smartgridsolutions.com	996-555-6789	User	Etc/GMT +6	Daniel Moyers 24
Idar Vozov ivozov@smartgridsolutions.com	212-555-6789	User	Etc/GMT +6	Test group
William Marshall wmarshall@smartgridsolutions.com	212-555-6789	Organization admin	America/Indianapolis	Demo Devices
Martin Miaya mmiya@smartgridsolutions.com	212-555-6789	Group device admin	Etc/GMT +6	Demo Devices
Victor Trac vtrac@smartgridsolutions.com	212-555-6789	Organization admin	Etc/GMT +6	Test group
Malika Bondarenko mbondarenko@smartgridsolutions.com	212-555-6789	User	Etc/GMT +6	Daniel Moyers 24
Zhanara Tolobayeva ztolobayeva@smartgridsolutions.com	996-555-6789	User	Etc/GMT +6	Daniel Moyers 24
Idar Vozov ivozov@smartgridsolutions.com	212-555-6789	User	Etc/GMT +6	Test group
Victor Trac vtrac@smartgridsolutions.com	212-555-6789	Organization admin	Etc/GMT +6	Test group
Malika Bondarenko mbondarenko@smartgridsolutions.com	212-555-6789	User	Etc/GMT +6	Daniel Moyers 24

6 Groups

The Groups screen allows admins to create and manage device groups. Devices assigned to a group can be used for setting up group-based notifications. Notifications can be configured in the Notification Center.

7 Notification Center

The Notification Center enables admins to configure which users receive alerts, specify the types of events that trigger them, and choose whether notifications are sent via email, phone, or both. Admins can also add additional recipients as needed. Users are notified of events related to devices within their assigned groups.

