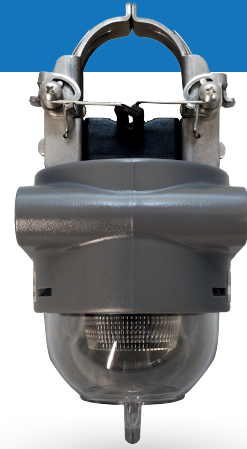


○ SPECIFICATIONS

FI-5A

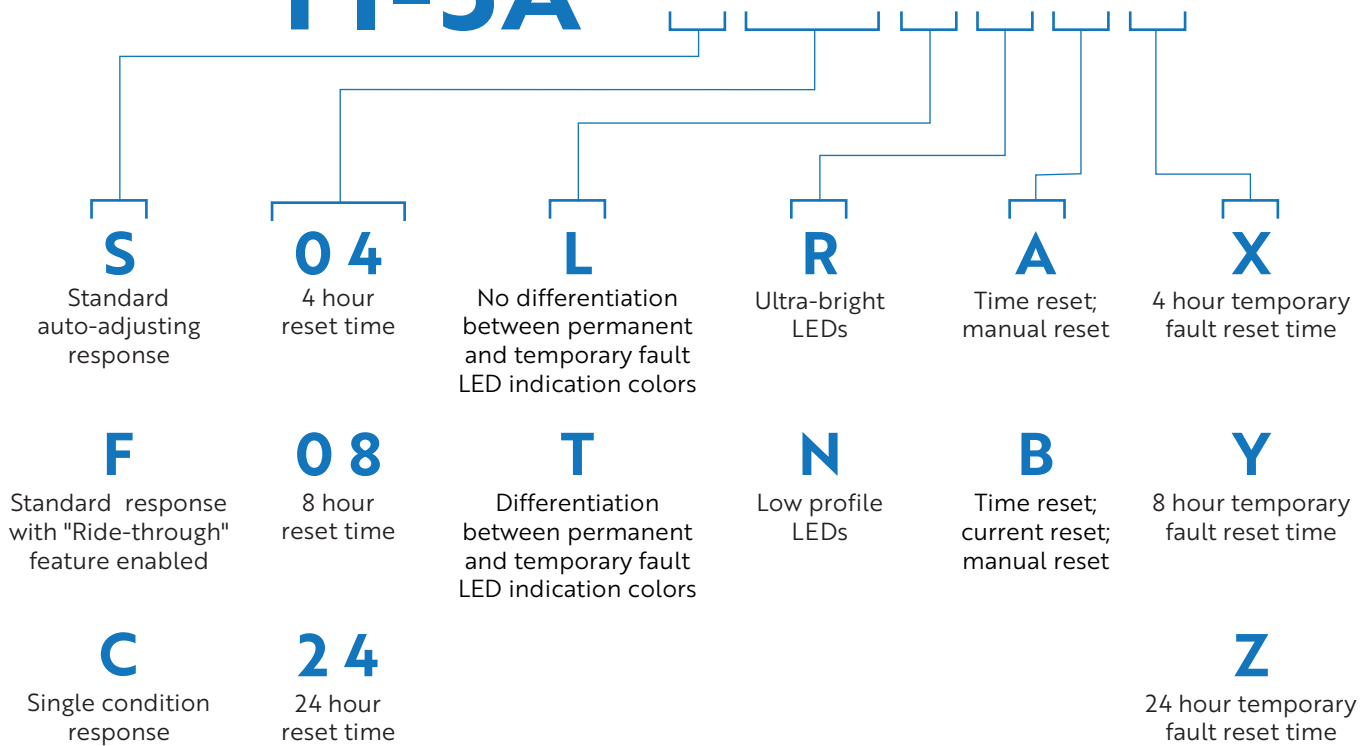
Overhead Faulted Circuit Indicator



Trip Current Range	Auto-adjusting trip level with real time load tracking
Voltage Range	Suitable for all voltages up to 69 kV
Power Source	10.9 Ah lithium cells, replaceable *20+ year shelf-life *harvests all required power from the line when load is >20 A *light sensor adjusts brightness for daytime brightness and nighttime power conservation
Manufacturer's Warranty	5 years from date of purchase
Installation Diameter Range	0.3 in to 1.7 in (8 mm to 42 mm) *bare or covered conductors
Indication	<ul style="list-style-type: none"> • High-intensity LEDs with light sensor • Custom designed lens gives true 360 degree visibility
Accuracy	+/-10%
Auto Reset Time	<ul style="list-style-type: none"> • Customer specified (standard settings of 4 hr, 8 hr, or 24 hr) • Separate reset times available for permanent and temporary faults
Total Indicating Time	>2000 hours
Visibility	>1500 ft daytime; >2500 ft nighttime
Current Withstand	35 kA for 3 seconds
Casing Materials	UV stable polycarbonate and potting compound
Current Transformer	Split core corrosion resistant stainless steel
Weight	22 oz (620 g)
Notable Features: Mechanical	Butterfly-style clamp design for easy and safe installation and removal with hot stick
Notable Features: Operating Principle	<ul style="list-style-type: none"> • Sub-cycle response time (ideal for use with current-limiting fuses) • Superior inrush current restraint • Recognizes post-fault backfeed current • Wide variety of settings available to accommodate existing customer practices and modern power systems • No minimum load current requirement to respond to faults
Compliance Standards	IEEE-495 (2007) compliant and ISO-9001 certified

○ CATALOG NUMBER

FI-5A



● Additional configurations and flash settings available. Ask your SGS sales representative or contact SGS directly to learn more about other options.