

Permanent Fault

flashes: **red**

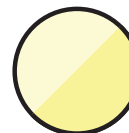
reset occurs: a) after programmed reset hours have been reached; or
b) when power is restored with current at around 50% or more of pre-fault load



Temporary Fault

flashes: **yellow, yellow, red**

reset occurs: after programmed reset hours have been reached

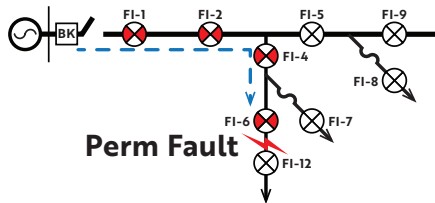


Low Battery

flashes: **slow, dim yellow**

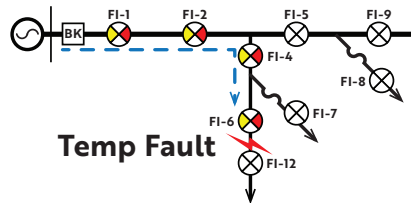
Manual reset can be performed using magnetic reset tool - manual reset is indicated by a single out of sync red flash.

Circuit breaker has locked out.



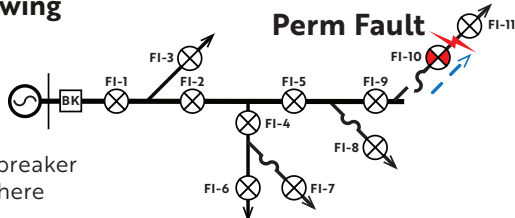
Perm Fault

Circuit breaker has cleared fault - no lock out.



Temp Fault

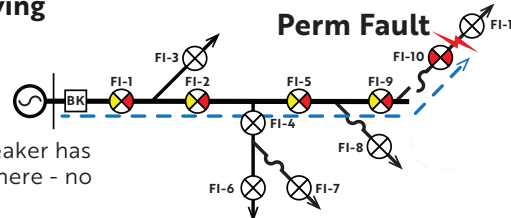
Fuse Blowing Scheme



No circuit breaker operation here

Perm Fault

Fuse Saving Scheme

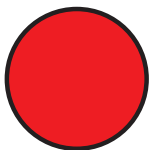


Circuit breaker has operated here - no lock out.

Perm Fault

These diagrams show which fault indicators flash and what color they would flash.

Model: FI-5A S__TRB-__ ex: FI-5A S04TRB-X, FI-5A S08TRB-Y, FI-5A S08TRB-Z, etc.



Permanent Fault

flashes: red

- What happened?
- What is happening now?
- What should I do?

Device detected fault current and saw a permanent line outage.

The line experienced a permanent outage. If flashing red, the device has not seen enough load current or enough time has not passed to automatically reset the device.

The cause of the fault is located downline – its cause will be located between the last flashing device and the first non-flashing device.



Temporary Fault

flashes: yellow
yellow
red

- What happened?
- What is happening now?
- What should I do?

Device detected fault current and saw a temporary line outage.

The line is energized. The fault occurred and then was cleared immediately afterward (likely from recloser action that did not result in lockout).

The cause of the temporary fault is located downline – its cause will be located between the last flashing device and the first non-flashing device.



Low Battery

flashes: slow, dim yellow

Model: FI-5A S__TRB-__

ex: FI-5A S04TRB-X, FI-5A S08TRB-Y, FI-5A S08TRB-Z, etc.