

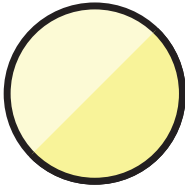
Permanent Fault

flashes:

red

reset occurs:

- a) after programmed reset hours have been reached; or
- b) when power is restored with current at around 50% or more of pre-fault load



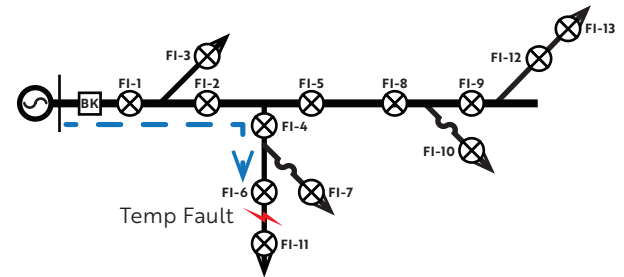
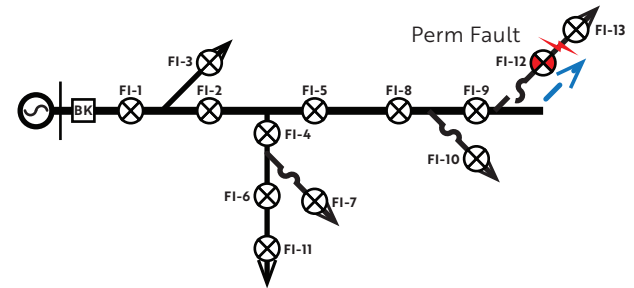
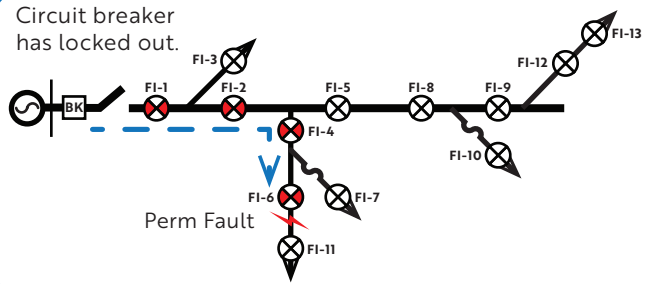
Low Battery

flashes:

slow, dim yellow

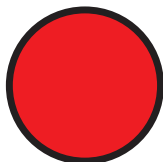
Manual reset can be performed using magnetic reset tool - manual reset is indicated by a single out of sync red flash.

These diagrams show which fault indicators flash and what color they would flash.



Model: FI-5A S__LRB

ex: FI-5A S04LRB, FI-5A S08LRB, FI-5A S24LRB, etc.



Permanent Fault

flashes: **red**

What happened?

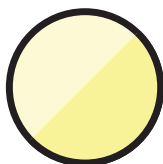
Device detected fault current and saw a permanent line outage.

What is happening now?

The line experienced a permanent outage. If flashing red, the device has not seen enough load current or enough time has not passed to automatically reset the device.

What should I do?

The cause of the fault is located downline – it will be located between the last flashing device and the first non-flashing device.



Low Battery

flashes: **slow, dim yellow**

What happened?

Device's batteries have begun to fail.

What is happening now?

Device will still recognize and flash for a fault occurrence but end of battery life is near.

What should I do?

Replace both failing battery packs with new battery packs.

Fault Indicators Reference Card

Model: FI-5A S__LRB

ex: FI-5A S04LRB, FI-5A S08LRB, FI-5A S24LRB, etc.