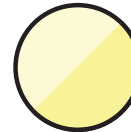


Permanent Fault

flashes: **red**

reset occurs: a) after programmed reset hours have been reached

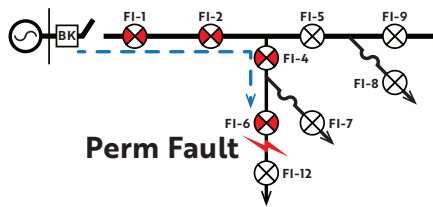


Low Battery

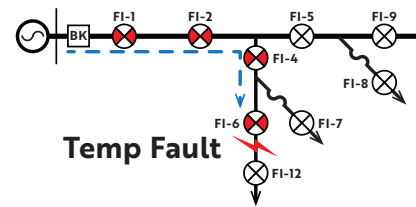
flashes: **slow, dim yellow**

Manual reset can be performed using magnetic reset tool - manual reset is indicated by a single out of sync red flash.

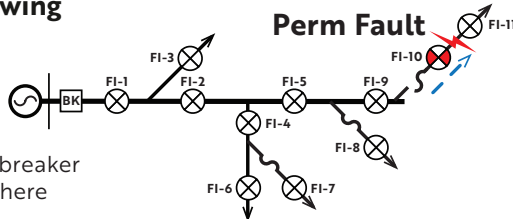
Circuit breaker has locked out.



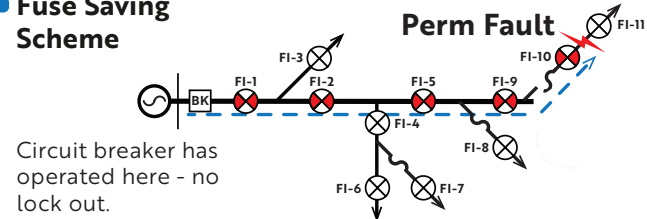
Circuit breaker has cleared fault - no lock out.



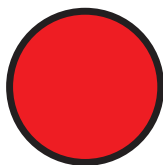
Fuse Blowing Scheme



Fuse Saving Scheme



These diagrams show which fault indicators flash and what color they would flash.



Fault Occurrence

flashes: **red**

● **What happened?**

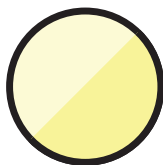
Device detected fault current and saw a line outage.

● **What is happening now?**

The line experienced an outage. If flashing red, enough time has not passed to automatically reset the device.

● **What should I do?**

The cause of the fault is located downline – it will be located between the last flashing device and the first non-flashing device.



Low Battery

flashes: **slow, dim yellow**

● **What happened?**

Device's batteries have begun to fail.

● **What is happening now?**

Device will still recognize and flash for a fault occurrence but end of battery life is near.

● **What should I do?**

Replace both failing battery packs with new battery packs.

Fault Indicators Reference Card