

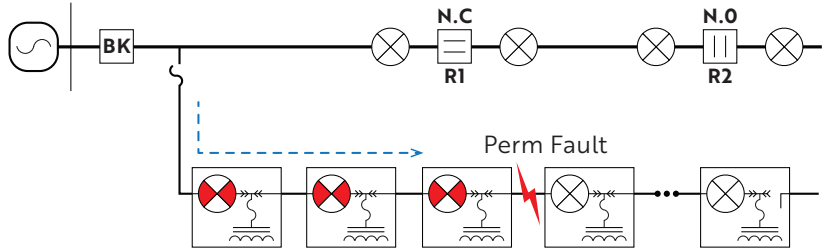
Permanent Fault

flashes: **red**
reset occurs:

- a) after programmed reset hours have been reached; or
- b) after forcing manual reset using magnetic reset tool - manual reset is indicated by a single out of sync red flash.

These diagrams show which fault indicators flash and what color they would flash.

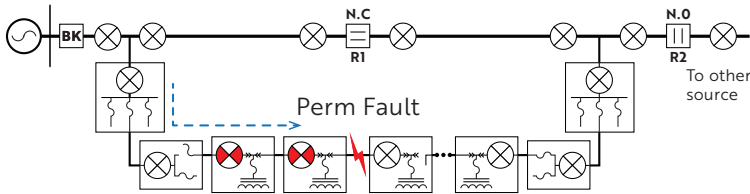
Simple underground protection system:



Complex underground protection system:

Scheme: Fuse Blowing

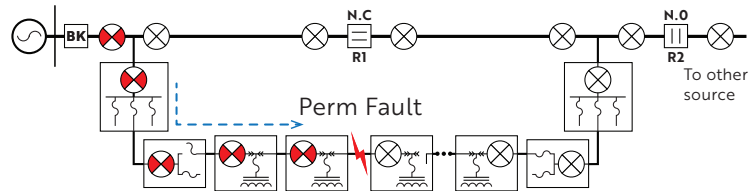
In this example, the fuse blows before the substation recloser operates.



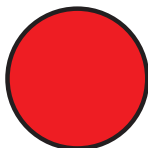
Complex underground protection system:

Scheme: Fuse Saving

In this example, the substation recloser operates once before the fuse blows.



Models: FI-3C S__NAX / FI-3C S__NCX



Permanent Fault

flashes: **red**

● **What happened?**

Device detected fault current and saw a line outage.

● **What is happening now?**

The line experienced an outage. If flashing red, sufficient time has not passed for the device to automatically reset.

● **What should I do?**

The fault is located downline – it will be located between the last flashing device and the first non-flashing device.

Fault Indicator Reference Card

Models: FI-3C S__NAX / FI-3C S__NCX