

Permanent Fault

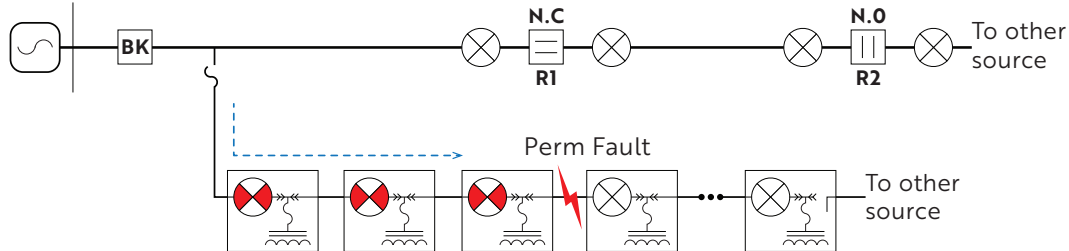
flashes: **red**

reset occurs:

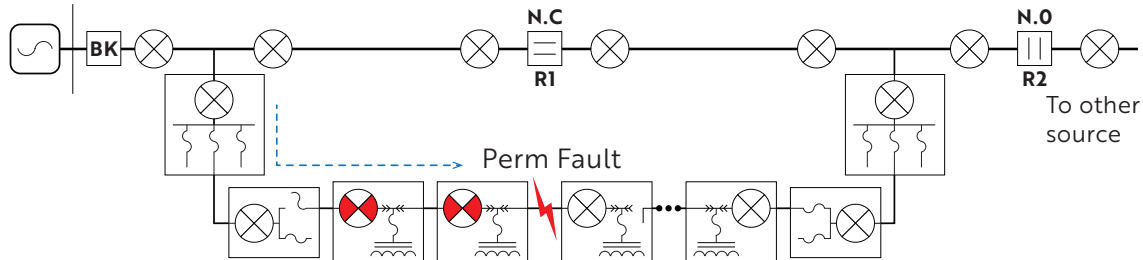
- a) after programmed reset hours have been reached; or
- b) when power is restored with current at around 50% or more of pre-fault load; or
- c) after forcing manual reset using magnetic reset tool - indicated by a single out of sync red flash.



Simple underground protection system:

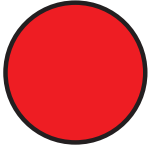


Complex underground protection system:



These diagrams show which fault indicators flash and what color they would flash.

Models: FI-3C S__NAM / FI-3C S__NCM



Permanent Fault

flashes: **red**



- **What happened?**

Device detected fault current and saw a permanent line outage.

- **What is happening now?**

The line experienced a permanent outage. If flashing red, the device has not seen enough load current or enough time has not passed to automatically reset the device.

- **What should I do?**

The fault is located downline – it will be located between the last flashing device and the first non-flashing device.

Fault Indicator Reference Card

Models: FI-3C S__NAM / FI-3C S__NCM