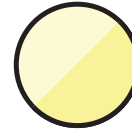


Permanent Fault

flashes: **red**

reset occurs:

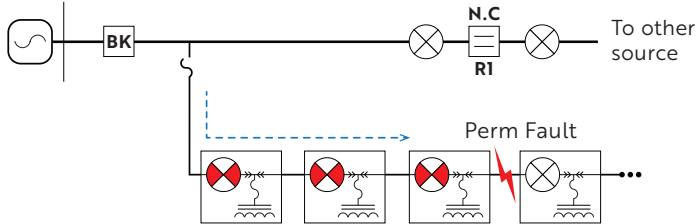
- a) after programmed reset hours have been reached; or
- b) when power is restored with current at around 50% or more of pre-fault load; or
- c) after forcing manual reset using magnetic reset tool - indicated by a single out of sync red flash.



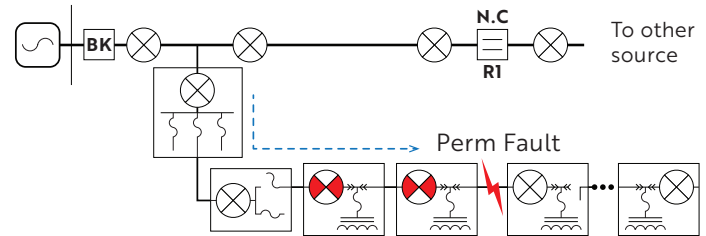
Low Battery

flashes: **slow, dim yellow**

Simple underground protection system:

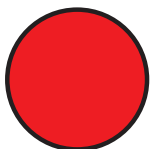


Complex underground protection system:



These diagrams show which fault indicators flash and what color they would flash.

Models: FI-3C S__BAM / FI-3C S__BCM



Permanent Fault

flashes: **red**

● **What happened?**

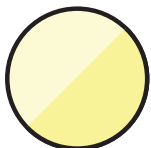
Device detected fault current and saw a permanent line outage.

● **What is happening now?**

The line experienced a permanent outage. If flashing red, the device has not seen enough load current or enough time has not passed to automatically reset the device.

● **What should I do?**

The fault is located downline – it will be located between the last flashing device and the first non-flashing device.



Low Battery

flashes: **slow, dim yellow**

● **What happened?**

Device's batteries have begun to fail.

● **What is happening now?**

Device will still recognize and flash for a fault occurrence but end of battery life is near.

● **What should I do?**

Replace the device with a new FCI - underground FCIs do not have replaceable batteries.

Fault Indicator Reference Card

Models: FI-3C S__BAM / FI-3C S__BCM