

Permanent Fault

flashes: **red**

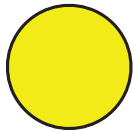
reset occurs: a) after programmed reset hours have been reached; or
b) when power is restored with current at around 50% or more of pre-fault load



Temporary Fault

flashes: **yellow**
yellow
red

reset occurs: after programmed reset hours have been reached



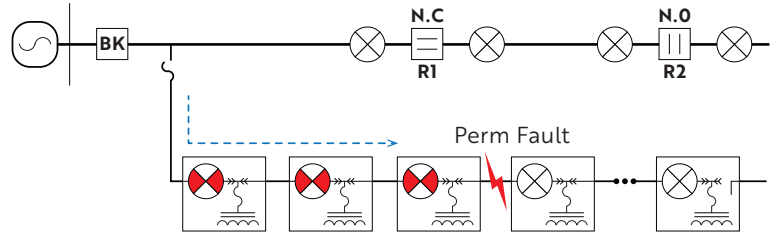
Overcurrent Event, No Line Outage

flashes: **yellow**

reset occurs: after programmed reset hours have been reached

Manual reset can be performed using magnetic reset tool - manual reset is indicated by a single out of sync red flash

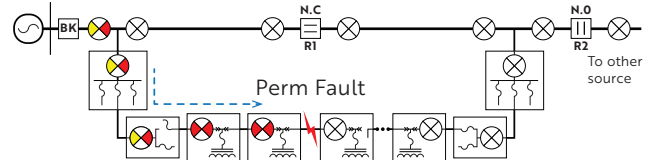
Simple underground protection system:



Complex underground protection system:

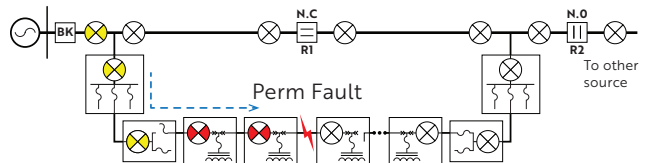
Example 1: Fuse Saving Scheme

In this example, the substation recloser operates once before the fuse blows.

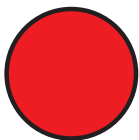


Example 2: Fuse Blowing Scheme

In this example, the fuse blows before the substation recloser operates.



Models: FI-3C F__NAM / FI-3C F__NCM



Permanent Fault

flashes: **red**

● **What happened?**

Device detected fault current and saw a permanent line outage.

● **What is happening now?**

The line experienced a permanent outage. If flashing red, the device has not seen enough load current or enough time has not passed to automatically reset the device.

● **What should I do?**

The cause of the fault is located downline – its cause will be located between the last flashing device and the first non-flashing device.



Temporary Fault

flashes: **yellow**
yellow
red

● **What happened?**

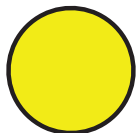
Device detected fault current and saw a temporary line outage.

● **What is happening now?**

The line is energized. The fault occurred and then was cleared immediately afterward (likely from recloser action that did not result in lockout).

● **What should I do?**

The cause of the temporary fault is located downline – its cause will be located between the last flashing device and the first non-flashing device.



Overcurrent Event, No Line Outage

flashes: **yellow**

● **What happened?**

Device detected fault current but saw no outage at its installation point.

● **What is happening now?**

The line is energized at the device's installation point. The fault occurred downline. No protection equipment upline from the device has operated.

● **What should I do?**

The cause of the fault is located downline – its cause will be located between the last flashing device and the first non-flashing device.

Fault Indicators Reference Card

Models: FI-3C F__NAM / FI-3C F__NCM