

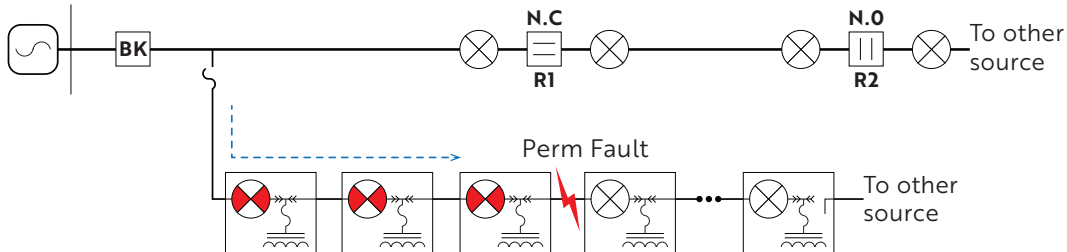
## Permanent Fault

flashes: **red**

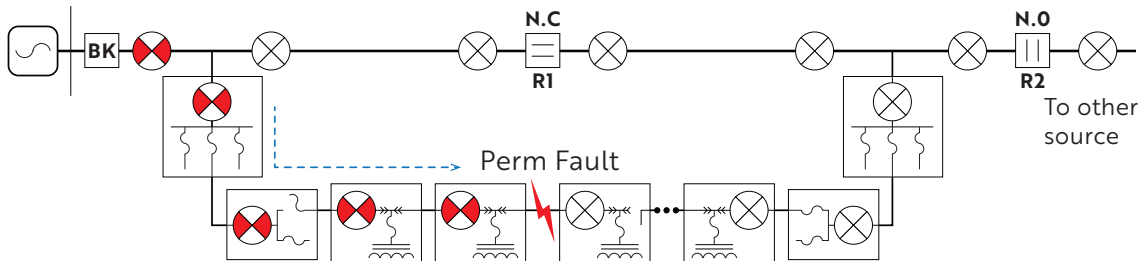
reset occurs: a) after programmed reset hours have been reached; or  
b) after forcing manual reset using magnetic reset tool -  
manual reset is indicated by a single out of sync red flash.

**BE AWARE THAT RED FLASH DOES NOT MEAN EQUIPMENT IS DE-ENERGIZED**

### Simple underground protection system:

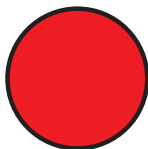


### Complex underground protection system:



These diagrams show which fault indicators flash and what color they would flash.

Models: FI-3C C\_\_NAX / FI-3C C\_\_NCX



## Permanent Fault

flashes: **red**

### BE AWARE THAT RED FLASH DOES NOT MEAN EQUIPMENT IS DE-ENERGIZED



● **What happened?**

Device detected fault current.

● **What is happening now?**

If flashing red, sufficient time has not passed for the device to automatically reset.

● **What should I do?**

The fault is located downline – it will be located between the last flashing device and the first non-flashing device.

# Fault Indicators Reference Card

Models: FI-3C C\_\_NAX / FI-3C C\_\_NCX